

Annual Report for 2013



St. Giles Presbyterian Church
1102 23 Ave NW, Calgary AB T2M 1T7
(Body Corporate under the Religious
Societies Lands Act of the Province of Alberta)
The Reverend Dewald (Dewey) Delport
Minister

ST. GILES PRESBYTERIAN CHURCH, CALGARY, ABLERTA
Fifty-seventh Annual Meeting
Sunday, February 2nd, 2014

AGENDA

Opening Prayer

Appointment of Secretary

Adoption of Annual Meeting, February 3rd, 2013 & Pgs. 3-5

Adoption of Congregational Meeting September 29th 2013 Pgs. 6-7

Mission, Motto, Values, & Vision Pgs. 7-8

Minister's Report Pgs . 9-11

Session Report Pgs. 11-12

Statistical Information for 2013 Pgs. 12-13

Reports from Committees of Session and Congregational Groups Pgs. 13-21

Terms of Reference Pgs. 21-22

Envelope Secretary Pgs. 24-25

Report of Finance Committee Pgs. 25-28
Financial Statements, 2013 Supplement

Memorial funds

Review of Stipend and Salaries

Presbyterians Sharing

Statements of Operations

Budget 2014 Pgs. 27-28

New Business

Adjournment – Prayer

**Minutes of the Congregational Meeting
February 3, 2013
St. Giles Presbyterian Church**

Approximately 43 people were in attendance.

The Rev. Dewald Delport called the meeting to order at 11:40PM with a devotional from John 8:12 and prayer.

Recommendation 1:

Moved by J McLean and seconded by S Cameron Evans that Fiona Wilkinson be appointed secretary for the meeting.

CARRIED

Recommendation 2:

Moved by I McKay and seconded by D Long that the minutes of the 2011 Annual Meeting held on January 29th, 2012 be approved as printed.

CARRIED

Business Arising From Minutes:

Questions were asked about how complete the volunteer database is and how it can be accessed.

About half of the questionnaires have been returned and the information is available from the secretary.

Recommendation 3:

Moved by M Moorhouse and seconded by I Mewha that all reports except the Financial Reports be received and approved.

CARRIED

Minister – Rev Delport thanked the congregation for their support.

Session – Noted that all elders were present in worship and were recognized with applause for their leadership.

Statistical Report for 2012 – Welcome to new members.

Quintus Group – Third Wednesday of month 1pm.

Choir Report – Appreciation was shown for their ministry.

Growing in Faith Together – members stood and were recognized for their devotion to spiritual growth of all ages in congregation.

Mission in Action – John mentioned the possibility of partnering with Marni Strome in supporting her work in Africa.

Pastoral Care & Card Secretary – Thank you for the valuable work you do.

What's Up – Merle and all contributors were thanked. It is published 3 times a year – please share it with others.

Second Sunday Singers – men are needed!

Archives – Thanks to Janet for organizing

It is the 40th Anniversary of Confederation Park Lodge and St. Giles has been invited to be a part of celebration.

Policy and Planning and Human Resources – Thanks were expressed.

Envelope Secretary – Number of envelopes down, but offering in them is up.

Facilities and Maintenance – Thanks to those who maintain the building.

Sound System – more volunteers are needed.

Financial Reports:

Treasurer, Ted Samson, presented the Financial Reports and Budget.

3398 – Bazaar

1671 – Garage Sale

1469 – Turkey Supper

1455 – Spring Tea

1086 – Robbie Burns

Thanks to Wendell Siddall for reviewing the financial statements.

E Daly expressed thanks to those who do such an excellent job of managing the finances of St. Giles.

Recommendation 4:

Moved by T Samson and seconded by W Siddall that the Memorial Funds Report be accepted and approved.

CARRIED

Recommendation 5:

Moved by T Samson and seconded by W Siddall that the 2012 Financial Statements and Annual Report be accepted and approved.

CARRIED

Recommendation 6:

Moved by T Samson and seconded by W Siddall that the Presbyterians Sharing item of the 2013 Budget in the amount of \$20,000.00 be accepted and approved.

CARRIED

Recommendation 7:

Moved by S Cameron Evans and seconded by W Siddall that the salary recommendations of the 2013 Budget be accepted and approved.

CARRIED

Recommendation 8:

Moved by T Samson and seconded by Dennis Daly that the proposed 2013 budget be accepted and approved as printed.

CARRIED

New Business

In reviewing the Declaration of Incorporation of St. Giles, it still refers to the Chairman of the Board of Managers, a committee and position that no longer exist. As well, it was proposed to allow greater flexibility by having any 2 of the 3 persons named deal with property issues.

“Moved by S Cameron Evans, seconded by W Siddall: The officers who shall exercise the powers of the body corporate in any dealing with the property thereof are the Clerk of Session, the Convenor of Policy and Planning and the Treasurer of St. Giles Presbyterian Church in Calgary. Any two (2) of these persons can deal with any property issues arising.”

CARRIED

M Moorhouse encouraged members to subscribe to the Presbyterian Record to keep up with the larger denomination.

Comments were made regarding regular advertising in the Calgary Herald or other mediums to promote St. Giles. It was felt that at least we should do the religious full page special advertising at Christmas and Easter. Policy & Planning continue to review this issue.

M Moorhouse extended thanks to Reverend Delport for his enthusiasm, knowledge, and willingness to work with us here at St. Giles.

Thanks were extended to all the staff.

Rev. Delport encouraged everyone to invite a friend or neighbour to church or to one of our events.

J Thomson moved that the meeting be adjourned at 12:40PM.

CARRIED

Rev. Delport closed the meeting in prayer

Minutes of the Congregational Meeting

September 29, 2013

St. Giles Presbyterian Church

Thirty-five (35) members and adherents were in attendance.

The Rev. Dewald Delport called to the meeting to order at 11:20 a.m. and offered a prayer.

Rev. Delport gave the floor to Bill Woodward. Bill gave a brief overview of the work of the *Conversation Group* (Bill Woodward, Chris Browne, Susan Carmichael, Natalie Hampton, Mike Moorhouse, and Dewald Delport) as well as outlining the opportunities the congregations had for input.

Bill suggested we look at the proposed document in the following order: Framework, Values, Vision, Mission, Motto.

ALL AGREED

Framework Statement: The framework statement was presented to the congregation. Time was given for discussion. The question was put the congregation to accept it.

ALL AGREED

Values: The Values were presented to the congregation. Time was given for discussion. One comment was that “it was a lot to live up to” & that “it is God’s will for us.” The question was put to the congregation to accept the value statements as presented.

ALL AGREED

Vision: The Vision statements were presented to the congregation. Time was given for discussion. The question was put to the congregation to accept the vision statements.

ALL AGREED

Mission: The Mission statement was presented to the congregation. Time was given for discussion. The question was put to the congregation to accept the mission statement.

ALL AGREED

Motto: There are two Mottos. The congregation was given the opportunity to discuss the Mottos in Table Groups. After discussion the question was put the congregation. It was **AGREED** that option 1 (Called by Christ, Committed by Faith, Connected by Community) be the Motto for St. Giles.

Time was given for any other questions, concerns, or comments. Eric Daly expressed thanks for the work done by the *Conversation Group*. The congregation responded with applause.

The document as a whole was presented to the congregation. There was consensus that the document was God-honouring, well-written, researched, an encouragement for St. Giles to live out its mission, and providing us with a focus.

The question was put to the congregation to accept the document as a whole.

ALL AGREED

Sandra Cameron Evans reminded us that it is important for us, as a congregation, to follow through on what we just accepted; therefore, as a congregation, we have to work together as we continue to discern God's will for us on how we live up to our mission statement and work towards our vision statements.

Mike Moorhouse proposed that **session approve the document as it is written and act upon it.**

ALL AGREED

Rev. Delport ended the meeting with prayer.

St. Giles Presbyterian Church

St. Giles Framework Statement:

We are God's people: enabled by the Holy Spirit, saved by Grace and nourished by Scripture.

St. Giles Mission is to nurture a vibrant Christian life; we will seek to grow in our relationship with God, we will care for the community and we will dare to follow Christ into the world.

St. Giles' Motto:

Called by Christ, Committed by Faith, Connected by Community.

Our Core Values:

Worship

We value the opportunity to study, praise and worship with a focus on the Word of God.

We value feeding the spiritual yearning of the congregation through well preached sermons, communal prayer, Bible study, inspired music, art and drama.

We value the involvement of all people - of all ages- in worship and outreach.

Community

We value the fellowship of a warm and caring community that seeks to serve each other, the larger community, and Christ.

We value the Reformed Tradition of the Presbyterian Church in Canada.

Inviting Others

We value the act of inviting others to share in our celebrations of Christ's way in the world, and welcome all those who would come to our Church to learn who we are.

Spirituality

We value spiritual growth, and the power of prayer.

Humanity

We value human dignity and aspire to Grace in our lives through right Relationships¹ and compassionate care for one another.

Education

We value Christian education, for people of all ages.

We value nurturing the young through an active church school program, youth group, Vacation Bible School, and the provision of nursery services.

Our Vision:

Worship

We envision joyful celebrations of God and the life and teachings of Christ at worship through engaging ways of reaching and teaching those who seek spiritual growth.

Community

We envision a vibrant, active congregation of all ages, growing and participating in a joyful community grounded in Christ's commands².

-
1. "Right Relationships" are those reflected in Matthew 22:37-40: "... You shall love your neighbour as yourself ..."
 2. Christ's commands: "You shall love The Lord your God with all your heart, with all your soul, with all your mind... You shall love your neighbors yourself."

We will grow our understanding of what it means to be part of the Presbyterian Church in Canada.

Inviting Others

We envision an open, welcoming church, active in the broader community, sharing the joy of Christ's mission with others, and inviting them to join us.

We will strive to attain the faith and courage we need to verbalize our faith, to take the risks and to embrace the changes we are led to by God in fulfilling His will for us.

Spirituality

We envision a church life that nurtures and strengthens each member's ability to develop a sustaining, personal, spiritual relationship with God and to maintain it through prayer and practice.

We envision a personal relationship with God, being open to hear God's instruction, and seeking to live each day guided by the Holy Spirit.

Through an active prayer life we seek to experience the transforming presence of the Holy Spirit as God works within and through us.

Humanity

We will seek to follow Christ by engaging in local, national and global mission initiatives leading to a world in which justice, equality and love for our fellows are the norm and not the exception, and in which poverty, hunger, homelessness, violence, cruelty and ignorance are unknown.

We envision learning of community and world needs, and of opportunities to do what we can to act for justice and to encourage relevant social, health-giving, education, and fund raising activities.

Education

We see ourselves discovering Christ both as adults and children; studying and growing in our knowledge of the Bible and Christ's teaching.

Minister's Message

Jesus started preaching, "Change your life. God's kingdom is here."

Jesus went right ahead and gave his charge, "...Go out and train everyone you meet, far and near, in this way of life ..."

~Matthew 4:17, 28:18-19 (The Message)~

The Spirit works in amazing ways. For the past few days I have wondered what I will write for the Annual Report. Little did I know that two verses from Matthew (we are focusing on Matthew on Sunday mornings) would come to mind for the report.

I think it is amazing that Jesus started His ministry with these words: "Change your life"; and that He ended His earthly ministry with: "Go out and train everyone you meet, far and near, in this way." I believe these words remind us of our calling as followers of Jesus Christ.

I am inspired by what we have done in 2013 here at St. Giles. I know that Church life can be challenging at times; nonetheless, we are the body of Christ and brothers and sisters in Christ. This past year we had three baptisms and it is always a joy to have the little babies at the front. Baptisms also remind me of Jesus' words, "Go out and train everyone ... in this way of life." The Youth Group at St. Giles continues to be very strong and our Vacation Bible School also continued to grow. I think it is very uplifting to see this interest from young people at St. Giles. And I am confident that you'll keep them in your prayers. Our Bible Study also continues to have great support from parishioners. I find it uplifting that over the past three years people have become comfortable to discuss, talk about, and share during our time together. Please note that anyone is welcome to join us. This past year we also hosted quite a few events at the Church and I am grateful for all the hard workers and supporters, without you it would be very hard to do any of these.

I have noticed that people are continuing to contribute to the Penny Jar in the narthex even though we don't have pennies anymore. Thank you for your support to PWS&D through your contributions to the Penny Jar and the PWS&D appeal for the Philippines. I was also very encouraged by the congregations continued support for the other Mission related projects at St. Giles – *Room in a Box* and supporting *Thutong Ya Bana* in Kimberley, South Africa.

As always, I would like to remind you that I adhere to an open door policy. When the *Red Escape* is in the parking lot that usually means I am at the church and you are more than welcome to drop-in for chat or just a coffee (even tea). I am also more than happy to schedule an appointment if that works better.

I would like to mention one more inspiration from 2013. After about 6 months our congregation adopted a new framework statement, mission, motto, value, and vision. I

appreciate the hard work from the Conversation Group and your input throughout the process. These are now ours and as such we are going to own it. This past Sunday, January 19, I mentioned that Session has decided that for 2014 we will focus on two of our six visions – spirituality and inviting others.

I encourage you to support our congregation as we look at different ways in which we can grow in our spirituality after all Jesus did start His ministry by saying, “Change your life” and He ended His earthly ministry by saying, “Go and share with everyone the way of life.” I encourage you to support this congregation as we explore ways of inviting others.

My friends I thank you once again for your support of this congregation in 2013 and pray that you will continue to support St. Giles through prayer, financial stewardship, sharing of your gifts and talents, and by your encouragement as we continue to discern God’s will for us in Calgary.

Blessings,
Rev. Dewald (Dewey) Delport

2013 Session Report

Recently I must confess I have not been a very good clerk of session so perhaps it should be someone else reporting to you about the work of session. I assume you will read all the reports and in many respects they are prompted by the work of session members plus members and adherents. Hopefully this year will bring about a much needed change in the clerkship. I pray for the success of a new clerk.

Session seems much smaller in numbers as we have trouble getting a night all elders can make it.

The session welcomes the Nikki Oguntuase, as Administrative Assistant to the staff of St. Giles. May she enjoy her sojourn with us.

The session committees have been hard at work. They are all very appreciative of the nonsession members who serve on these committee's. Many members of our congregation give freely of their time to support the adventures our committees pursue in our work.

Session thanks the choir of St. Giles, the Sunday school teachers, the groups of people who prepare the food for events, the group that looks after the refreshments on a Sunday, the people that help keep the flowers blooming all summer, the people that look after the sound, and all other endeavours by God's people who quietly step up and do what is necessary.

At every session meeting elders share concerns expressed by people of the congregation. We do try to address these concerns. If you ever have any questions that you would like session to answer please take advantage of speaking to an elder. Rest assured your concerns are important to us.

They will be dealt with in a confidential manner and answered. We are pleased that there have not been many concerns expressed however session wants to let people know that this avenue is available. We also share at our meetings expressions of thanks and happiness. Session thanks the efforts of our minister Rev. Delport. His enthusiasm is infectious! We bless him, love him and feel honoured to work with him. "And the peace of God, which transcends all understanding, will guard your hearts and your minds in Christ Jesus" Philippians 4:7.

St. Giles Presbyterian Church **STATISTICAL REPORT for 2013**

Baptisms

The Sacrament of Baptism was received by 3 children

Gisele Olivia Kwiecinski, Nolan Lucas McMillan, Lila Rose Poon

2013 Membership Status

Communicant Membership as of January 1, 2013 **178**

Members Received in 2013

By Transfer	1
Total <u>1</u>	

Members Removed in 2013

By Transfer	1
By Resolution of Session	2
By Death	3
Total <u>6</u>	

Communicant Membership as of December 31. 2013 **173**

Membership, December 31, 2013: 178

Membership, December 31, 2014: 173

We regretfully record the names of Members, Adherents and Friends of St. Giles who died during 2013;

Jeannie Irving, Duncan Lindsay, Donna McQuay, Al Russell.

Average Sunday Service Attendance:

2013 > 80 (adults including choir, 74, children, 6) **2012 > 78** (adults including choir, 73, children, 5)

Easter: 2013> 124 2012 > 135

Christmas Eve: 2013 > 192 2012>183

Overall our worship attendance increased in 2013.

Respectfully submitted,

Dawn Flint

St. Giles Choir Annual Report 2013

The choir prepares one or more anthems for most Sunday services from September to June.

We started the year off by singing at the Robbie Burns dinner at the end of January, organized by and hosted by choristers Ian McKay and Bill Woodward.

The choir prepared special music for Good Friday and Easter Sunday services

Many of our members shared their talents at the annual Folk Night in early April 2013.

The choir performed in May 2012 with the Crescent Heights High School choir and the Calgary Children's Choir at the Rosza Centre, UofC, featuring Requiem by Gabriel Faure.

In July, Ian McKay coordinated our "Stampede band and choir", and many of our members contributed solos, duets, quartets, and instrumental music in the summer, as they do also throughout the year.

We continued to rehearse and present anthems during the fall of 2013.

The choir was joined by Leanne Paisley, trumpet, for special music on the Remembrance Day service.

On December 12, the choir hosted a Carol Sing – an evening which included sing-along carols, with performances by the choir and the Calgary Childrens Choir Christmas Ensemble. Refreshments, provided by the choir, were enjoyed by all following the event.

The choir again enjoyed the addition of Carmen Ashmead's string quartet as part of our annual Christmas Eve service, along with trumpet by Leanne Paisley.

The choir also, with the organizational help and "grunt work" of John Mclean and Janet Astle, set up and then disassembled the Christmas Tree and decorations.

We anticipate another Mass Choir performance with the Calgary Children's Choir, The Crescent Heights High School Choir, and special guests and orchestral ensemble, for a performance entitled "Songs of the Cinema" on Saturday, May 8. Our choir is blessed to have the full time accompanying talent of Esther Woelfle, with special appearances and fill in by Lori Chang-fiodl.

We continue to recognize and thank Janet Astle, who, as choir librarian, continues the large and endless task of keeping our music, birthdays, gowns, and all choir memorabilia and other details in order.

We also thank John Mclean for taking care of regular email updates to the choir, and maintaining close contact and communication with choir .

Choir rehearsals are on Thursdays at 7:30pm, and we have at least two social gatherings per year, with strategically planned breaks and treats at specified rehearsals! Choir is a great place to feel a sense of belonging in the church, and to have an opportunity to contribute to the service in a meaningful way. New members are always welcome. No experience necessary!

Respectfully submitted by:

Marni Strome

Jan. 2014

Growing in Faith Together (GIFT) Report

"With fresh new eyes, ears and heart, the team enthusiastically embraces the call to pass on the faith of the Church to children, youth and adults."

Throughout the past year the GIFT committee have planned and arranged different events for people of all ages as we grow in our faith. This report shows many of the things we have worked on in the past year.

We have continued to oversee the church school as they work with the children of our congregation. The teachers for the past year were Anne Halliday-Clark and Heather Mackie. **Thanks to the teachers for their dedication!** The substitutes were Dianne Mascardelli, Cathy Brown, Ivy Mewha and Sandra Cameron Evans. **Thanks to them for being available to give the teachers a break when needed!**

The children have also had several extra events this past year. They enjoyed making Easter cards for the Shut-ins as well as for the congregation, which they eagerly handed out on Easter Sunday morning. They treated the congregation to a Christmas Service about finding the meaning of Christmas. **Thanks to Sandra Cameron Evans and Cathy Brown for all their work with the children preparing for the Christmas Service and to all the adults who participated.** In December they also made Christmas cards for the shut-ins and had a bowling party. The children were also involved in the Mission's "Room in a Box" project. The church school went shopping to spend some of the money the congregation donated and it was great to see the kids thinking about what the best things to buy would be and how to get things that would be appropriate for different types of families, as we did not know who would be receiving the boxes. It was amazing to see how much they were able to purchase. **Thanks to the Mission Committee for letting the Church School be a part of this project.**

Over the summer months we asked for volunteers to teach the children each morning. The GIFT committee once again created weekly lesson packages with a story and pre-prepared craft that the volunteers were then able to use to facilitate the lesson. **Thanks to those who volunteered to teach during the summer!**

This year we again hosted a VBS in the summer. There were 15 children in all who attended. The children and leaders all enjoyed the week and learned lots. **Thanks to all the leaders, snack preparers and people who helped in all ways to make the week of VBS a success!**

During the summer we were also able to help 2 children attend Camp Kannawin and they came back with lots of new memories.

Our Youth Group continued all year with an average of 10 attending each month. The evenings of youth group included pumpkin carving, sledding, movie, games, baking and decorating cakes, face painting, and much more. Our youth look forward to their monthly youth group and enjoy fellowship with each other. **Thanks to Rev. Delport for his leadership.**

On the adult side of things, we had several different groups and/or events for the congregation.

We held 4 movie nights. Each night saw 8 – 12 people watch a movie together, enjoy some popcorn and then close with a discussion of the movie. The movies we watched included August Rush, The Passion, Life is Beautiful and The Nativity Story. **Thanks for Rev. Dewald and John Watson for running the movies.**

In March we hosted a workshop focusing on three faith journeys of Head Heart and Hands presented by Dr. Jane Jensen.

The weekly bible study continued this year and focused on The Gospel according to Luke, 1 Peter, and The Gospel according to John. **Thanks to Rev. Delport for leading these studies.**

The GIFT committee also organized the Son-Rise Service on Easter Sunday, followed by breakfast. It was a cool morning but there were 31 people present who braved the cool to start their morning with worship led by Rev. Delport and singing accompanied by Bill Woodward and Ian MacKay on guitar.

This year we have re-organized the library to make it easier to find the books you are looking for by having clear sections. Pop by the library and take a look or take a book home to enjoy. We have also put some Audio books (CDs) and a couple of DVD movies in there.

The GIFT committee members for this past year were: Joanne Watson, Ivy Mewha, Ann Frost, Heather Mackie, Gail Wearmouth and Toby Gaskarth.

If you have any ideas for the future, especially of studies or events you would be interested in seeing the GIFT committee host, or items you would like to see in the library, please talk to one of the committee members. If you would like to be involved, we would welcome you to be part of our team, just talk to any of the members as listed above.

Respectfully submitted,

GIFT committee.

Mission in Action Report 2013

The mission committee works toward keeping the congregation informed of the work done by Presbyterian World Service and Development (PWS&D) as well as Presbyterians Sharing. We also identify mission projects at the local, national, and international level where we feel that we can make a positive difference in the lives of others.

A change jar in the narthex accepts donations for PWS&D. As well, special appeals such as for the disaster in the Philippines this year are made as needed. In total, approximately \$1300 was donated through St. Giles for PWS&D needs in 2013.

March 17, 2013 was designated by presbytery as Acadia Place Sunday. There is an on-going need for donations to help pay down the mortgage on this building so that the occupants can continue to afford reasonable rents and avoid homelessness.

Envelopes and brochures are available in the narthex for those wishing to make donations toward Acadia Place.

In the late spring, the congregation got involved in a fundraiser to support the Thutong Ya Bana mission school in Kimberley, South Africa. Marni Strome, our music director, has visited the school numerous times and was able to give us a presentation that outlined some of the needs of the students and staff who attend this school. All proceeds from the Folk Night went toward this cause and many donated through envelopes that were made available in the pews. In total, we raised just over \$2700 which Marni was able to take with her to the school in August. Upon her return, Marni gave another presentation which clearly demonstrated how we were able to provide food, clothing and school supplies to those at the mission school and how grateful the students and staff were toward our congregation.

The Thanksgiving food drive for the Calgary Interfaith Food Bank was well supported by the congregation once again. Over \$1000 in donations were received as well as a quantity of imperishable food items.

Presbyterian Sharing Sunday was observed on October 20, 2013. The service was led by members of the mission committee and highlighted a number of the projects that are directly financed through Presbyterian Sharing.

This was the year of the Great Flood of 2013 in Calgary and area. We responded during the late fall and into Advent with the Room-In-a-Box- Rebuilding High River One Room at a Time campaign. The church school children did some of the shopping for this project and helped with getting things organized for delivery to High River.

Approximately \$2000 in cash was received through envelope donations. This money was used to purchase new household items that will be distributed to families in High River as they begin to return to permanent homes and accommodations. As well as the cash donations, a few families chose to complete an entire box (room) of needed items. Others purchased several items from our lists and these were put together to complete boxes. In total, we as a congregation were able to provide 14 complete room boxes and also donate 15 small appliances for the kitchens.

Lastly, but not least, we continue with our Inn From the Cold Program which operates one evening each month of the year. Most nights we have about 15 guests who sleep in the church hall over night. They are provided with a dinner, breakfast and a bag lunch. It takes around 25 volunteers to run this program on any given night. If you are not yet involved as a volunteer, speak with Susan Carmichael, our Inn volunteer coordinator and she will set you up.

Looking back over the year, we have done quite a bit as a congregation to improve the lives of others less fortunate. As we move forward, we need to continue to build on our past

successes and look for ways to grow in our mission work at St. Giles.

Respectfully submitted by John McLean, Mission In Action convener

Pastoral care committee report for 2013

We have had another busy year keeping up with the many changes to our members. Sadly we have lost 4 members over the last year, and they will be forever remembered. Our prayers are with their family and friends.

Many thanks go to Arlene Simpson who has sent out many cards to mark occasions affecting our members. Chris Browne is thanked for arranging special transportation to enable out “homebound” to attend special events.

As a committee we continue to visit and keep in touch with our “homebound”, sick an those in need of extra comfort. Our ministers’ company is much appreciated during these visits. We hope with these visits to make those members feel they are still an important part of our “church family”. We continue with our monthly services at the Fanning Centre, with music provided by Beth Ferguson, to whom we are very grateful.

We held 2 special communion services for our “homebound” this year. The spring event was attended by 15 members and the fall event by 11 members. We have enlarged our attendees by making it available to nay members who wish to participate. Those attending are very grateful to our minister for his meaningful sermons and his fellowship in the lunch that follows.

Our committee assembled small gifts to go on to the “homebound” over the Christmas season. We visited them all with the much appreciated help of other church members our Sunday school class have to be thanked for all the lovely individual cards they made to accompany those gifts.

We are very grateful to our minister for his guidance, expertise and his inspiration. We thank him most sincerely for his involvement in our committee.

Respectfully submitted

Jenny Thomson

Convenor.

Card Secretary Annual Report

The following is the number of cards I sent in 2013. I did not send as many as in past years so if you know of someone who should receive a card please let me know.

Birthday	9
Get Well	7
Thinking of You	7
Sympathy	7
Birth of Babies	2

Respectfully Submitted

Arlene Simpson

“What’s Up?”

2013 Annual Report of our Church Newsletter

Over the past year, three issues of “What’s Up?” our church newsletter were published. The editorial team includes Susan Carmichael, Merle Dalip, Pearl Dalip and Rev. Dewald Delport. We could not have put this Newsletter together without the help of our dedicated and regular contributors: Janet Astle (Archives), Chris Browne (Special Events), Sandra Cameron Evans (Presbytery), Dawn Flint (Special Events), Heather Mackie (Church School), Michael Moorhouse (Special Events), Ted Samson (Finances), Marni Strome (Choir News) and John Watson (Special Events).

Each issue of our Newsletter features a message from the Minister, Editorial, Articles, News and Themes, as well as updates from various committees. Just as importantly, there is news from various members of the congregation, inspirational scripture quotes, humor and photographs from different occasions, plus information on upcoming events.

We would like to specially thank Rev. Dewald Delport for his wealth of knowledge and for his contributions. Also, we are very appreciative of the many suggestions and contributions of members of the congregation and we look to your continued support and encouragement.

Respectfully submitted, Merle Dalip

2013 Report of the Second Sundays Singers

The Second Sunday Singers have had a great year in 2013. We have had about 10 people come and join us singing at Hillcrest Extendingcare. We make a great team! Gillian Siddall and Beth Ferguson have been taking on the role of playing the piano, while Dewald Delport takes on the role of being the minister. Gillian is still working on making some changes to the songs that we are currently singing and she hopes to complete in the next few months. Regarding donations, Gillian Siddall got a check for \$50 at Christmas from Hillcrest and it will be put towards the church. We sing the second Sunday of the month, and everyone is welcome to sing from 2-2:45pm. It is a lot of fun for us as well as the Hillcrest community.

Thank you, Gillian Siddall

Archives – Report for 2013

The purpose of the archives is to collect the church records in one place, ensure their preservation, organize them for ease of access and have the most important documents preserved on microfilm.

Work on the archives continued as usual during the year, including filing service bulletins, funeral cards, photographs of various events, and other papers. I am currently sorting through a large deposit of papers that had been accumulated by Ted Samson's father and was discovered while Ted was clearing out the family home.

There were a few requests from the congregation for information from the archives, and I used the archives myself for two articles in our newsletter *What's Up?*

As always, I am happy to receive any church related documents for inclusion in the archives. I am now prepared to receive photographs as either actual prints or in digital format.

Respectfully submitted, Janet Astle

Report of the Policy and Planning Committee 2013

The Policy and Planning Committee takes direction from Session and addresses strategic areas impacting the life and work of St. Giles.

The work on St. Giles' vision and mission statements done by a small team was completed, and enthusiastically approved at a Congregational Meeting in September 2013. However work must continue to ensure St. Giles implements and lives out the vision, mission and values identified.

The Committee continues to support the work of the Human Resources Committee which reports to Policy and Planning.

At the 2013 Annual Meeting the congregation passed a resolution to amend the Declaration of Incorporation, identifying any two of the Clerk of Session, the Convener of Policy and Planning and the Treasurer to deal with any property issues arising. This amendment received the necessary government approvals.

Policy and Planning worked with the Finance and Restricted Funds committees to develop Terms of Reference for our undesignated funds. These include memorial donations that have not been identified for a specific purpose. Those Terms of Reference (see below) were approved by Session and are included in this Annual Report for your information.

Our relationship with the Calgary Korean Evangelical Church continues and Rev. Delport, the Mission in Action Convener and the Policy and Planning Convener continue to meet as necessary to ensure that the arrangements in place are satisfactorily meeting the needs of both congregations.

MEMBERS:

Jack Alexander	Marilyn Machum
Sandra Cameron Evans, Convener	Wendell Siddall
Dennis Daly	John Watson
Rev. Dewald Delport	

Undesignated Funds Terms of Reference

For St. Giles Presbyterian Church
October 2013

- **Purpose for the Funds** – The undesignated funds will be used for programs and projects that support St. Giles' mission/vision/core values (Worship, Community, Inviting Others, Spirituality, Humanity, Education) and are beyond St. Giles' normal upkeep/operations budget.
- **Guidance in determining their specific use** – each year a specific focus linked to the mission/vision/core values will be identified by Session and communicated at the Annual Meeting; a maximum of 20% of the undesignated funds may be used each year.
- **Responsibility/Approval** – the Restricted Funds Committee will maintain a record of the various funds and the details for their potential uses, where so stated. They will make recommendations on their use for Session's final approval.

- **Communication** – Currently a process is in place where St. Giles sends cards to the donors and family members of those being memorialized. A brochure will be developed that will explain how St. Giles' manages and uses Memorial Funds. The congregation will be informed at Annual Meetings how the funds have been used in the past year and what the specific focus will be in the coming year (i.e., example of the painting for 2013).

Human Resources Committee Annual Report 2013

For the last 3 years we have been saying it was a year of change. 2013 was no different. Regretfully, Irene Savage moved to Ottawa thus resigning from the HR Committee. She was a dedicated member and her contributions will be missed. We were fortunate to have Lesley Hawkes volunteer to join the committee.

The annual Evacuation drill was successfully completed with St. Giles and the Korean congregations on September 22, 2013. It is hoped that the actual Fire Alarm can be used for the Korean Church in the future as the substituted whistle was not very effective. It has been suggested that the drill be held in the fall instead of spring so that any new Church School people would be involved.

At the end of October, Fiona Wilkinson resigned as Church Secretary. While we were very sorry to see Fiona leave, we were happy that she found a position much closer to her home and provided more hours of work.

The position was once again posted under the title of Administrative Assistant working from 9:00 am to 1:00 pm Tuesday to Friday with the possibility of additional hours during busy times. Applicants were interviewed and we were pleased that Adenike (Nikki) Oguntuase accepted the position. Fiona's graciously offered to return to St. Giles and help orientate Nikki.

In the spring, Elaine Zhao, volunteered to work in the nursery. She had planned to return in the fall but has moved across the city and was unable to continue. As this is an important ministry, we are once again advertising for a Nursery Worker. Until the position is filled, we will be relying on volunteers from the congregation. Lesley has several volunteers who have agreed to be on a rotation basis for now. As Rev. Delport has pointed out, twelve volunteers means duty once every 3 months.

We would like to thank those that have volunteered and done Nursery duty especially Susan Cooper, Sandra Cameron Evans, and Heather Mackie who have taken more than their share of Sundays.

In December the committee convened to discuss and recommend salary increases for St. Giles

Staff to the Policy and Planning Committee.

Respectfully submitted,
Marilyn Machum, Convenor

Sound System Report 2013

We had to replace two of our mikes this year it has made a large improvement to the sound.

We still put the sound on the website; we now have video there to. We hope that everyone will take some times to look and give some feedback. It is hard to operate the sound over the summer months with the number of sound operators; we need help in this ministry. I would like to thank Mark McCuaig, David Brown, Lorne Cowan, and David McCormick for their support over this last year.

Respectfully submitted by Walter Cooper

Facilities and Maintenance Report 2013

Committee members consisted of and involved the following:

Jack Alexander	Lorn Cowan	Dennis Daly
Walter Cooper	Ted Samson	Dave McCormic
Fraser Haliday	Jason Gaskarth	Norm Miller
John Watson		

Rev. Dewald was a great support throughout the year.

This year was an expensive year as basement fridge and dish washer problems consumed much more of our budget than anticipated for a normal year.

These get a great deal of use and were considered worth the repair costs.

There is a great deal of ongoing work such as the back ramp and snow removal in the parking lot that seems to be done in a timely manner.

Norm gives us wonderful value in his yard and garden maintenance, and "Cutting Edge" represents good value as well.

The painting of the church and house was accomplished for \$26,000 and was done with undesignated memorial funds and did not affect the maintenance budget. The sanctuary had not been done since 1992 when Don Bain and his work crew completed the task.

For 2014 we hope to get by with a similar budget to last year in the anticipation of fewer fridge and dishwasher problems.

For 2014 our big budget item will be repairing the stained glass windows in the sanctuary

which will be done one window at a time for a cost of about \$3000 each beginning with those most warped.

This is important as they are all gradually sliding down on each other and cracking as a result.

The additional reinforcing should render them much sturdier than the original installation and is considered a good long term investment.

Dennis Daly

Envelope Secretary's Report 2013

The 2013 General Envelope Offering Summary is as follows:-

Number of Envelopes	Weekly Contribution Range	Annual Average per contributor	Annual Totals per grouping
16	up to \$2 per week	\$50	\$800
6	\$2 – 4 per week	\$171	\$1,025
17	\$5 – 9 per week	\$326	\$5,550
14	\$10 – 14 per week	\$545	\$7,625
9	\$15 – 19 per week	\$868	\$7,810
16	\$20 – 29 per week	\$1,187	\$18,994
17	\$30 – 49 per week	\$1,957	\$33,268
21	\$50+ per week	\$4659	\$97,839
116	Total 2013 General Envelope Offerings		\$172,910
118	Total 2012 General Envelope Offerings		\$194,937

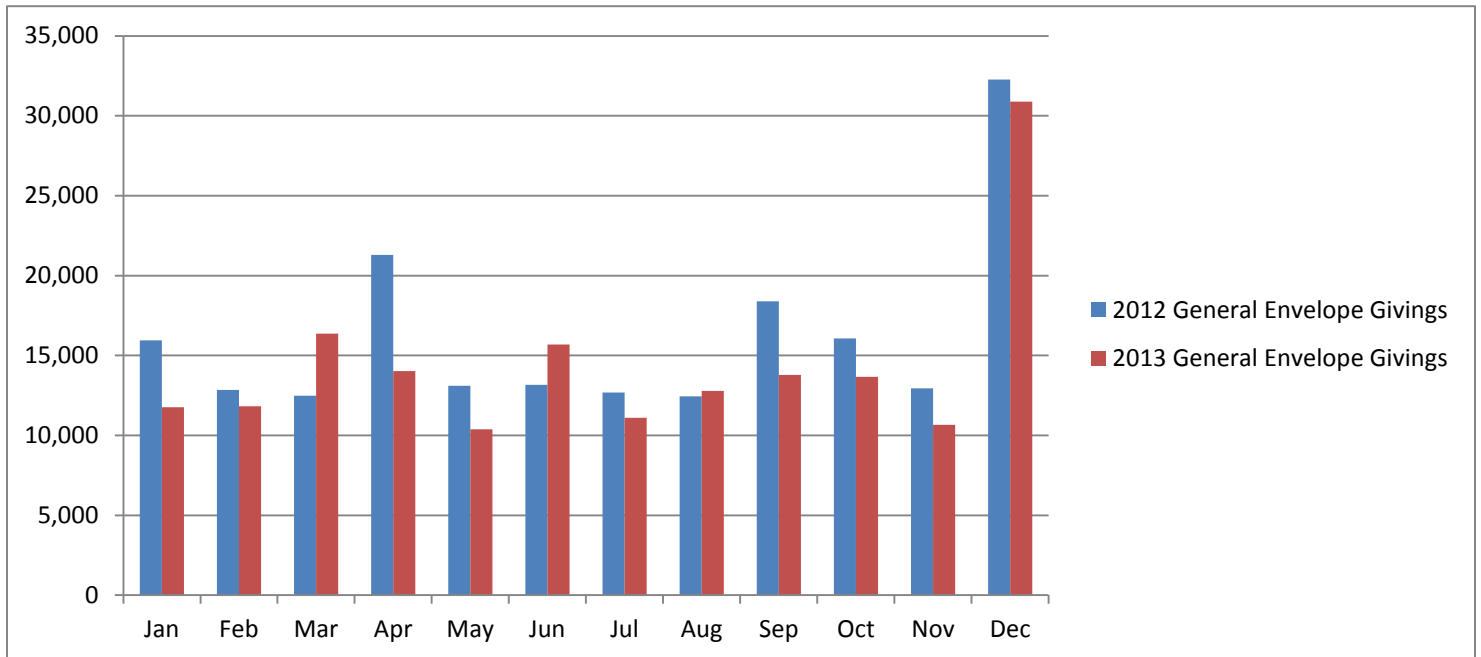
The chart above shows the 2013 General Envelope Offerings which includes both envelopes and PAR but does not include offerings given by visitors. These numbers do not include designated funds.

The numbers are grouped based on weekly contributions, while the annual totals at the bottom show the amount for the year.

This year our general envelope givings for both individuals and the congregation as a whole are lower than last year. This year the average individual giving was \$1,491 compared to \$1,652 last year. The Congregational general envelope givings are \$22,027 lower than last year.

For us to increase our general envelope givings we need all members to find the bracket they are in and endeavour to move closer to the middle of their bracket or to move into the next

bracket.



Comparison of General Envelope Offerings.

This graph illustrates the offerings by month throughout the year comparing 2012 and 2013. It shows there were variances each month unfortunately most are lower this year than last. While April looks like an extremely large variance it must be noted that there was an extra Sunday in April last year.

2013 Financial Report

The Annual Financial Statements for the year ending December 31, 2013 appear on the next pages, as well as the Proposed Budget for the new year 2014. The budget pages include the 2013 Budget, the actual figures for 2013 and the proposed 2014 Budget. We hoped that our General Offerings for 2013 would be slightly better than what we received in 2012 (just over \$200,000) because our budget called for an additional \$10,000, but instead we received only \$177,475 or just under 85 percent of the budget figure. Even though the rest of our income was better by over \$6,300, it was not enough to make up for the substantial shortfall in our total income. Although Congregational Life income was lower than usual, other donations (funerals and weddings) was up.

Our expenses for 2013 were quite close to what we budgeted for, requiring \$251,161 in cash, only about \$7,400 over budget. This was due to much higher Repairs and Maintenance expenses during the year, including major repairs to the downstairs cooler and dishwasher, replacement of the sump pump and an almost complete

repainting of the interior of the Church Building (\$21,512). The latter plus several other items were paid for with monies from unrestricted Memorial Funds.

Our Unrestricted Memorial Funds had several very large contributions during 2013: more than \$77,400 from the bequest of one long time member; more than \$17,000 from the bequest of another long time member; and an Gift annuity of \$2,850 from a member who joined us recently from Chalmers. We also received \$3,000 in memory of two individuals and \$165 in memory of three others. There was a \$300 memorial donation to our Inn From the Cold program.

As a congregation, we continue to support various Mission Projects, in addition to our accepted allocation of \$20,000 to "Presbyterians Sharing". In 2013, we contributed \$9,944 towards several mission work projects:

- \$1,135 to Acadia Place
- \$2,706 to Marni's Mission School in Kimberley, South Africa
- \$1,962 to the Room in a Box program
- \$1,095 to the Calgary Interfaith Food Bank, plus food donations
- \$ 400 to Presbyterians Sharing through additional donations
- \$1,319 to PWS&D Philippine Typhoon Relief and General appeals
- \$1,327 to our own Inn From the Cold program.

Since we did not meet our budget in 2013 and the new budget for 2014 is about the same amount as last year, we will have to consider whether we can continue to expect increased givings each year with a shrinking congregation. Or should we base our anticipated envelope givings on past performance and raise increased revenues from other sources.

Respectfully Submitted,
Edward C. Samson (Convenor, Finance Committee, and Treasurer)

ST GILES PRESBYTERIAN CHURCH	2014 BUDGET Proposed	2013 ACTUAL	2013 BUDGET
Assessments			
Presbytery and Synod Dues	10,550	11,496	11,493
Presbyterian Pension Plan	10,550	10,550	10,320
Extended Health Care	5,982	6,151	6,405
	<u>27,082</u>	<u>28,197</u>	<u>28,218</u>
Salaries			
Minister's Stipend	50,000	46,462	46,462
Minister's Rent Allowance	21,600	18,600	18,600
Minister's Utilities	3,600	3,686	3,600
Minister's Study Leave	1,500	1,000	1,000
	<u>76,700</u>	<u>69,748</u>	<u>69,662</u>
Church Secretary and Supply	14,180	19,023	20,800
Church Officer and Supply	20,525	20,202	20,202
Director of Music	8,905	8,765	8,765
Organist, Pianist	10,275	10,076	10,065
Church Nursery	1,620	0	1,620
Employee Benefits	7,100	7,121	6,700
	<u>139,305</u>	<u>134,935</u>	<u>137,814</u>
Christian Education			
Sunday School and Teacher Recognition	600	519	700
Youth Group	450	812 *	450
Adult Education	350	0	350
Vacation Bible School	150	455	150
Library	150	14	150
	<u>1,700</u>	<u>1,800</u>	<u>1,800</u>
Worship and Service			
Congregational Life Events	1,000	311	1,000
Music Materials	1,500	1,210	1,500
Special Occasion Music	1,000	903	1,000
Pastoral Care	100	92	100
Pulpit Supply	1,200	1,050	1,200
Sundry	500	1,096	500
	<u>5,300</u>	<u>4,662</u>	<u>5,300</u>
Mission and Outreach			
Advertising	700	668	300
Designated Expenses	5,000	7,298	5,000
Donations	200	200	200
Inn From the Cold	1,500	1,327	1,500
Mission in Action Projects	100	0	250
Presbyterians Sharing	17,700	20,000	20,000
PWS&D	0	1,319	0
Burst Forth Women's Gathering	2,000	0	0
	<u>27,200</u>	<u>30,812</u>	<u>27,250</u>

Church Office and Supplies			
Office Supplies	2,300	2,179	3,000
Telephone, Internet	7,400	7,331	6,800
Copier and Computer	3,000	2,950	3,000
Bank Charges	450	436	450
	<u>13,150</u>	<u>12,896</u>	<u>13,250</u>
Property Expenses			
Amortization	19,500	19,500	19,500
Insurance	2,500	2,537	2,600
Organ and Piano Repair	1,000	1,963	1,000
Repairs and Maintenance	11,500	42,554 **	11,500
Electricity, Natural Gas	15,000	14,255	15,000
	<u>49,500</u>	<u>80,809</u>	<u>49,600</u>
Total Budgeted Expenses	<u>263,237</u>	<u>294,111</u>	<u>263,232</u>
Certain amounts are from special funds	0	(23,450)	0
and depreciation is not a cash charge	(19,500)	(19,500)	(19,500)
Net Cash Requirements	<u>243,737</u>	<u>251,161</u>	<u>243,732</u>
Revenues are derived from			
Envelopes			
Progress Fund	0	0	0
Designated Donations	5,000	7,399	5,000
Memorials	1,000	3,165	1,000
Open Plate	4,000	3,976	4,000
Congregational Life Events	10,000	7,911	10,000
Sunday School	0	0	0
Vacation Bible School	0	531	0
Youth	0	0	0
Inn From the Cold	1,500	1,327	1,500
Interest Earned	0	0	0
Korean Church	10,800	10,800	10,800
Other Donations(funerals,weddings,etc.)	1,500	3,679	1,500
PWS&D	0	1,319	0
Total Other Income	<u>33,800</u>	<u>40,107</u>	<u>33,800</u>
ENVELOPE OFFERINGS for the year	<u>209,937</u>	<u>177,475</u>	<u>209,932</u>
Net Surplus for the year	<u>0</u>	<u>(33,579)</u>	<u>0</u>

* Youth Group includes \$600 for camperships paid from Robson/Emerson Funds.

** Repairs and Maintenance includes \$21,512 for painting and \$1,338 for new mic, camera and pots; all paid from unrestricted Memorial Funds.